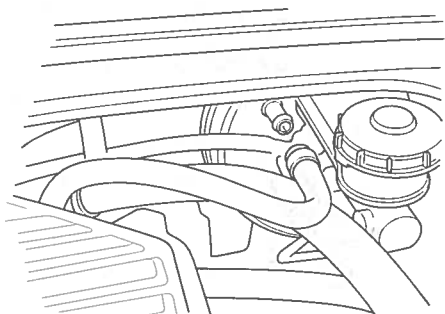


Engine Assembly

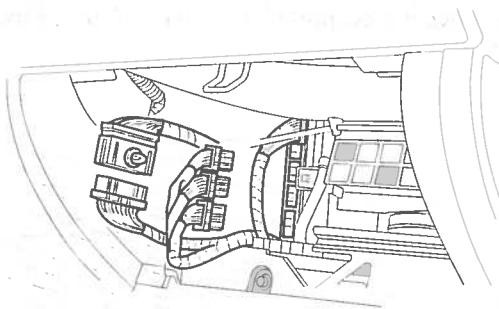
Engine Removal (cont'd)

13. Remove the brake booster vacuum hose.

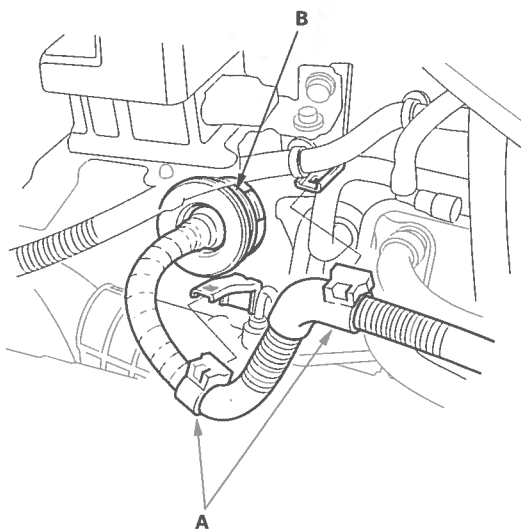


14. Remove the glove box stops, then open the glove box.

15. Disconnect the engine control module (ECM)/powertrain control module (PCM) connectors.

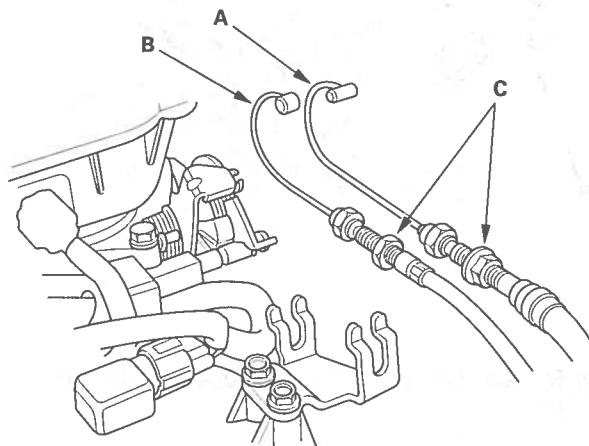


16. Remove the harness clamps (A) and grommet (B), then pull the engine wire harness through the bulkhead.



17. Remove the throttle cable (A) and cruise control cable (B) by loosening the locknuts (C), then slipping the cable ends out of the accelerator linkage. Take care not to bend the cables when removing them. Always replace any kinked cable with a new one.

Except 2-door D17A1, D17A2 engines:



2-door D17A1, D17A2 engines:

